



GENANO 200 AIR PURIFIER

SERVICE INSTRUCTIONS

GENANO OY
Pyyntitie 3, 02230 Espoo

Tel 09 -7743 870
Fax 09 -7533 130

www.genano.fi
info@genano.fi
huolto@genano.fi

REPLACING THE FAN	2
PROGRAMMING THE FAN	6

REPLACING THE FAN

Purpose of this operation is to replace line voltage operated, 2-speed fan type Ebmpapst.

Tools needed:

1x PZ1 screwdriver

1x pliers

Estimated time needed: 30 minutes

1. **Unplug Genano 200 unit.**
2. Open top plate 5 x PZ1 type screws.



3. Remove front panel: open 2x screws and pick the panel up.

tehnyt T.T.



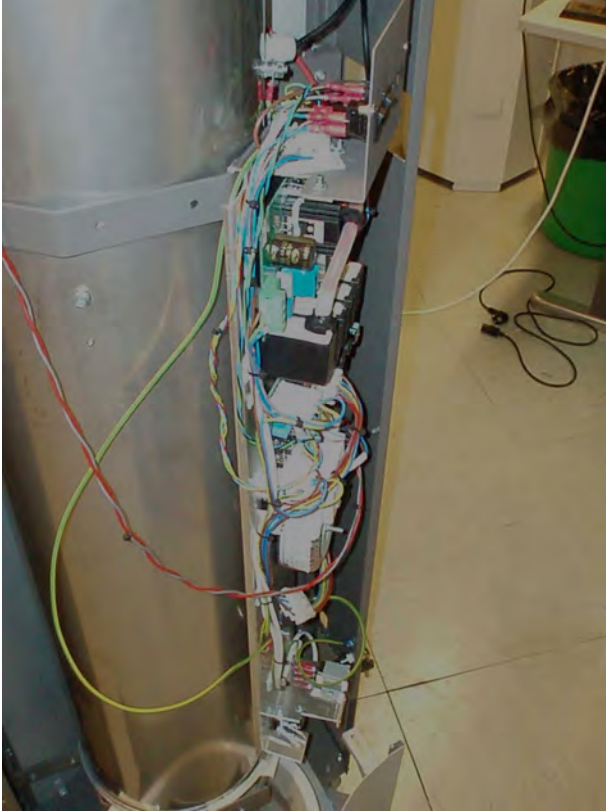
4. Remove gas absorber plate



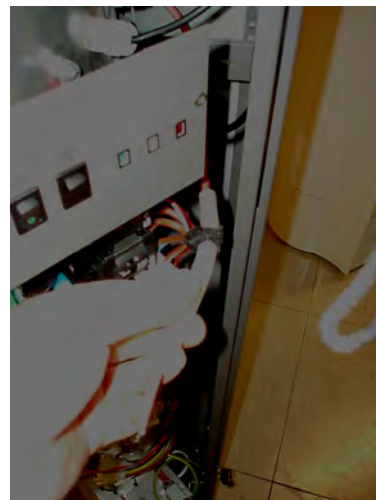
5. Remove electronics board (4x screws mounted through the side cover).

6. Put board hanging of it`s hooks.

tehnyt T.T.

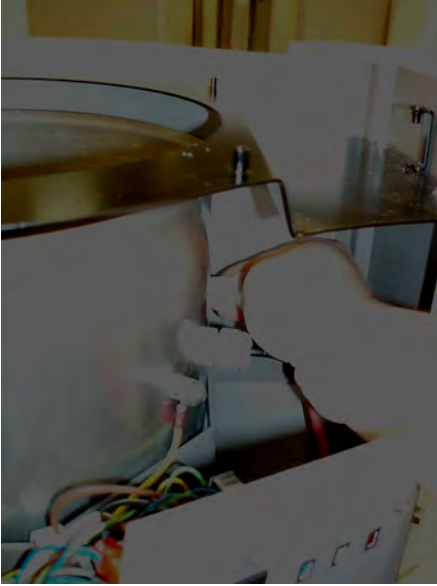


7. Remove high voltage cable from High voltage unit and remove silicon tube around the cable (release herbie clips with pliers)



tehnyt T.T.

8. Loose the pipe terminal of HV cable.



9. Slip cable through it's pipe terminal.



10. Remove the line connector of the fan.

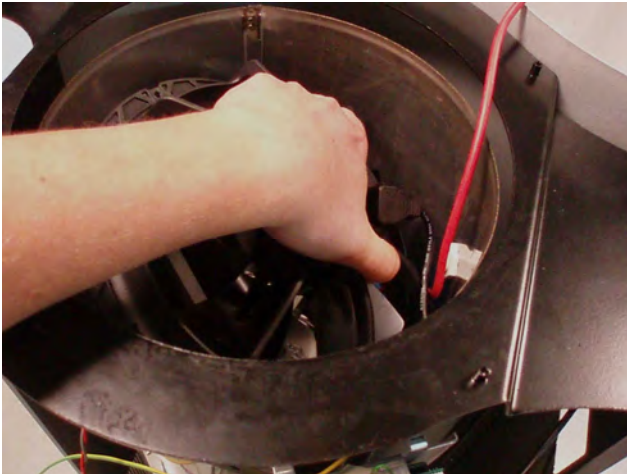


tehnyt T.T.

11. Remove 4 x screws holding the fan.



12. Pull fan out of tube.



13. Replace new fan and **reassembly all parts** removed in opposite order.

Important note! Before reassembling, please check that HV cable does not touch the wings of the fan. You can adjust the position of cable by tightening the pipe terminal.

PROGRAMMING THE FAN

The rotation speed of the fan can be reprogrammed with Ebmpapst ESM software and USB programming converter. Please read the program manual of the installation CD before installation/use of the program.

1. Unplug Genano 200.
2. Remove top plate 5 x PZ1 type screws.
3. Remove gas absorber plate
4. Disconnect fan line connector from motor for period of programming. **Never program active fan.**

tehnyt T.T.

5. Connect programming converter and wires to computer USB terminal. Recommendation is to always use same USB terminal, otherwise communication problems may exist.
6. Open Ebmpapst ESM program
7. Define COM port, go to Extras/interface.
8. Give Values Speed 1 and speed 2
9. Click Write. Yellow LED lights up during transmission. RED lights up error.
10. Please, check programming by choosing Read icon. Programmed values should be seen in Eeprom window. Note: some version of Ebmpapst program does not give significant error notification when communication is missed. Always check programming!
11. Reassemble fan line connector, gas absorber and top plate, then finish with test run.

